

# MCS

marine control services

– on duty for the chief engineer



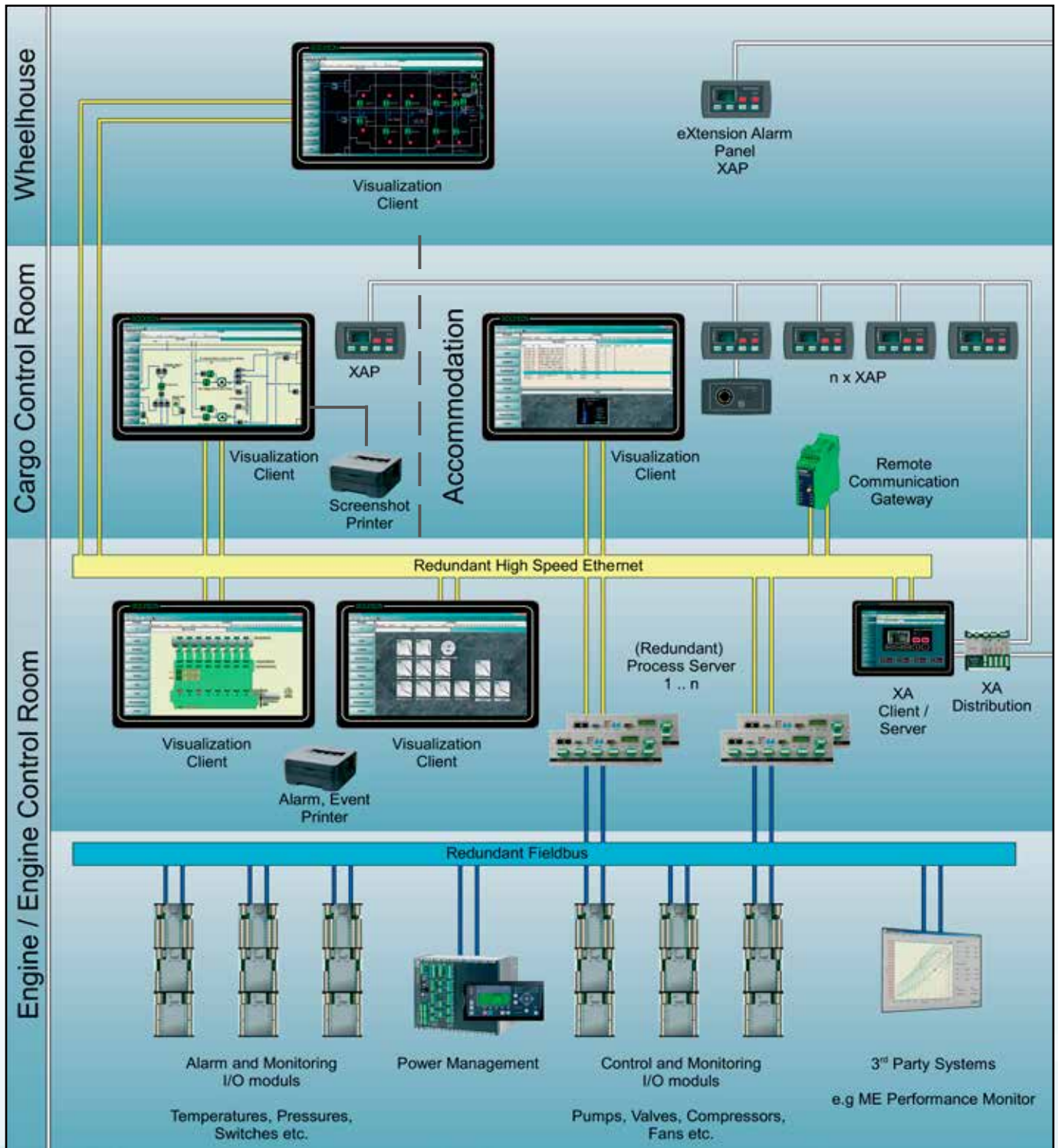
Foto: Harald M. Valderhaug

## EVOLUTION V5

NEXT GENERATION INTEGRATED AUTOMATION SYSTEM



# System configuration



Tailor made  
 Safety focused  
 Available  
 Precise  
 Trustworthy

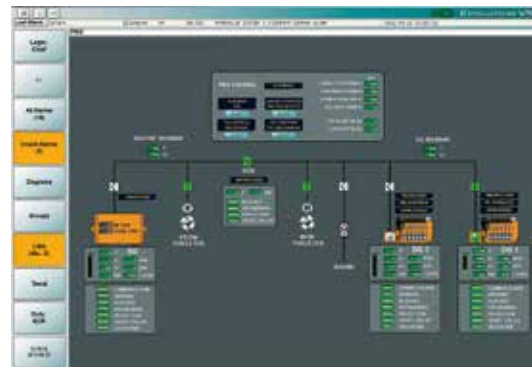
## Standard Features

- Standardized alarm visualization with
  - List of all active alarms with time stamp
  - List of unacknowledged alarms with time stamp
  - List of suppressed alarm
  - List of disabled alarms
  - Alarm/event indication
  - Trend and historical data
  - MP selection with detailed parameter facilities



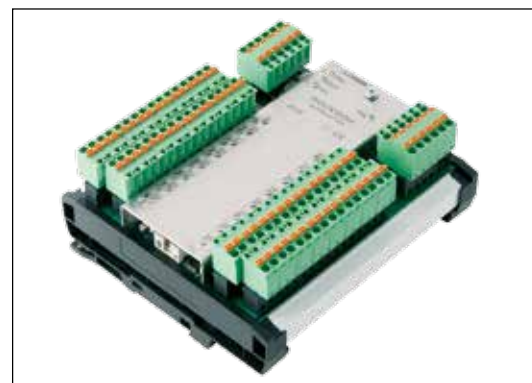
## Mimics – Customized process mimics

- Customized piping diagrams
- Customized realistic gauge panels
- Clear process data indication and control
- Based on scalable vector graphic technology
- Automatically adapting to different monitor sizes and format
- User definable zoom factor for each workstation



## Hardware – Standard

- 35mm DIN Rail modules with rugged stainless steel cover
- Galvanic isolated I/O design
- Integrated earth-fault monitoring on I/O
- Fanless process server with redundant solid state disk
- Compact XAS system



## Applications

- Basic monitoring functions
- Exhaust gas mean value supervision
- Historical reports and alarm statistics
- Level gauging, volume calculation, trim correction
- Standby pump control
- Valve control
- Automatic functions
  - Bilge
  - Ballast transfer & exchange
  - Fuel transfer and filling
- Fuel consumption and performance monitoring
- Liquid cargo management
- Power Management
- Interfaces



## Service and Remote Assistance

Our service concept is as simple and efficient as our slogan:  
***“On duty for the Chief Engineer!”***

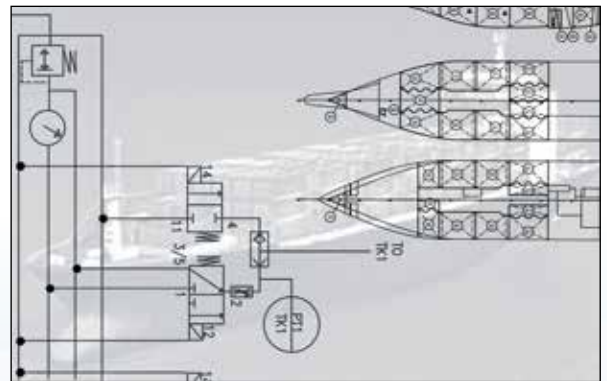
You can call us 24/7 and we will do our utmost to help you.  
Our phone number is directly connected to the service department outside normal office hours.

Remote Assistance Service is used for all our automation systems. The cost of travelling is taken away, and our response time is minimized. Available either for hire or sale.



## Components for integration

- Dead Man System
- BNWAS System
- Nautical Alarm System
- Emergency Telegraph System
- Signal Light Column
- Level Gauging System
- Fuel Oil Measurements
- Exhaust Gas Supervision



# MCS

## Marine Control Services AS

Øvre Eikervei 83,  
3048 Drammen, Norway

Tel.: +47 32 89 61 10  
E-mail: [post@mcs.no](mailto:post@mcs.no)  
[www.mcs.no](http://www.mcs.no)